



# EXETER HOMES TRUST BULLETIN

## JANUARY 2021

Exeter Homes Trust (Charity 201530) has been a registered provider (Housing Association) since 14th June 1976.

Since the advent of the COVID-19 Emergency and the universal curfew in varying degrees since 23rd March 2020, Directors and staff at Exeter Homes Trust have provided a comprehensive service to its residents, despite local and national difficulties impacting housing management operations. As of 6th January 2021, Exeter is covered by [National] Tier 4 restrictions.

To help colleagues serve you, we would ask you observe the following for the duration of the COVID-19 Emergency.

Only phone 01392 421162 between 11:00 hours and 15:00 hours, weekdays for routine matters. As always the phone is staffed out of office hours by KS Engineering Ltd (sometimes by Dave Woolacott), but they too are statutorily restricted. Please ensure your out of hours calls are strictly emergencies, for example gas leaks, electrical faults, water leaks (which require urgent attention). If you have a security matter to report, call 999 immediately. Although 6 Southernhay West will be staffed office hours, please do not visit.

The white goods in your Almshouse are gifted to you and they are your responsibility to keep maintained (except at Atwill Palmer where they are currently under contractual warranty). You may take them with you when you vacate.

If your utility supplier (gas, water, electricity, telephone), or Council Tax, requires attention, please contact them direct.

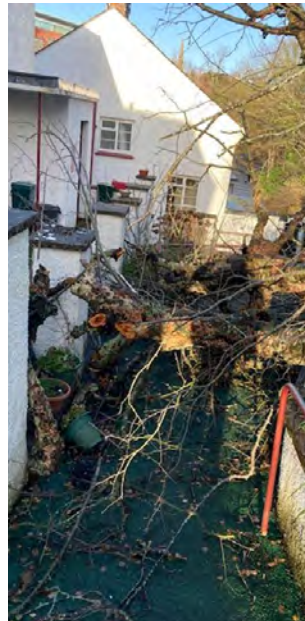
Smoking, e-cigarettes, tea-lights, candles, any device with a naked flame (other than a gas-hob) are strictly forbidden.

Tampering with the building fabric, fixtures, fittings, systems is strictly forbidden.

On a positive note, remodelling of Grendon Road Almshouses is still planned to commence next year

(2022), adding to Culverland Road, Magdalen Cottages and Atwill Palmer having been brought up to a contemporary standard.

We received a call out on Sunday 27th December 2020, when Storm Bella blew down a tree onto the access path at North Park Almshouses. Steve Sitch visited to assess and Ivor Hayes and Simon Cordery attended to cut up the tree and place it on the garden out of harms way. EHT's arborist has an order to remove it from the estate. Please see pictures below.



### COVID-19 Emergency January 2021 – 3rd Phase

Exeter Homes Trust is not complacent about the impact of the COVID-19 Emergency, which as of 6th January 2021 has now entered a third phase of universal curfew, however, operationally the provision of charitable housing has continued unabated. The office at 6 Southernhay West has been continuously staffed by key workers throughout the emergency.

# EXETER HOMES TRUST LOCATIONS



Exeter Homes Trust owns 143 Almshouses across nine sites in Exeter, and buildings range from Victorian and Edwardian to mid-war, post-war and contemporary.



- |  |  |
|--|--|
| <p><b>1</b> Culverland Road EX4 6JJ<br/>(24 x contemporary apartments)</p>                               | <p><b>6</b> North Park Almshouses, Magdalen Road EX2 4SU<br/>(20th cent. buildings with 12 apartments)</p> |
| <p><b>2</b> Livery Dole Flats, Magdalen Road EX2 5DT<br/>(15 x 1980s flats)</p>                          | <p><b>7</b> Fairpark Almshouses, Fairpark Road EX2 4HL<br/>(12 x 20th cent. apartments)</p>                |
| <p><b>3</b> Livery Dole Cottages, Magdalen Road EX2 5DT<br/>(11 apartments in a 19th cent. building)</p> | <p><b>8</b> Hurst Trumps Almshouses, Fairpark Road EX2 4HL<br/>(8 x 20th cent. apartments)</p>             |
| <p><b>4</b> Grendon Road EX1 2NJ<br/>(19th cent. building with 24 apartments)</p>                        | <p><b>9</b> Atwill Palmer, New North Road EX4 4JT<br/>(24 apartments in 19th cent. buildings)</p>          |
| <p><b>5</b> Magdalen Cottages, Magdalen Road EX2 4SX<br/>(19th cent. buildings with 13 apartments)</p>   |  |